

CONSULTANTS / DESIGN TEAM:
OWNER:
SAU #31
186A MAIN STREET
NEWMARKET, NH 03857

CM:
ECKMAN CONSTRUCTION COMPANY
84 PALOMINO LANE
BEDFORD, NH 03110
T: (603) 792-1227

CIVIL ENGINEER:
TIGHE & BOND
177 CORPORATE DRIVE
PORTSMOUTH, NH 03801
T: (603) 433-8818

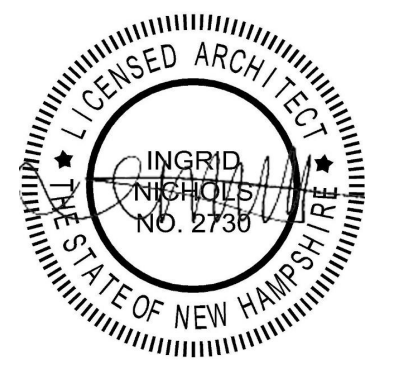
STRUCTURAL ENGINEER:
TF MORAN, INC.
48 CONSTITUTION DRIVE
BEDFORD, NH 03110
T: (603) 472-4488

ARCHITECT:
BANWELL ARCHITECTS
6 SOUTH PARK STREET
LEBANON, NH 03766
T: (603) 448-3778

MEP:
ALLIED ENGINEERING, INC
160 VERANDA STREET
PORTLAND, ME 04103
T: (207) 221-2260

FOOD SERVICE:
JOHNSON-LANCASTER AND ASSOCIATES, INC
13031 US HWY 19 N
CLEARWATER, FL 33764
T: (727) 796-5622

LIFE SAFETY:
SFC ENGINEERING PARTNERSHIP, INC
1 INDUSTRIAL DRIVE
WINDHAM, NH 03087
T: (603) 647-8700



REVISION	DATE	COMMENTS
1		

KEY PLAN & NORTH

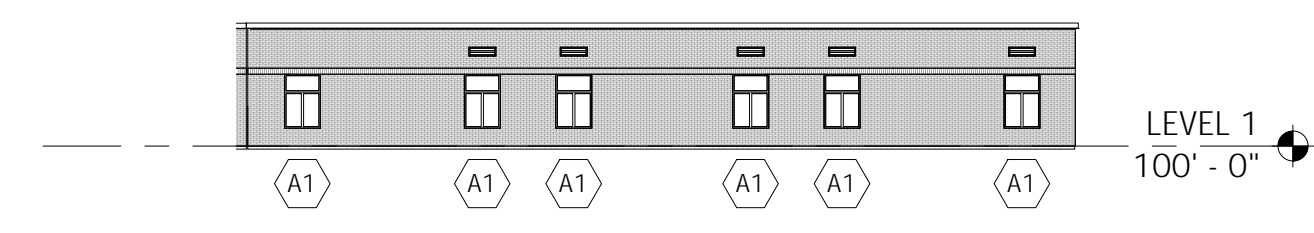
PROJECT:
NEWMARKET ELEMENTARY SCHOOL
243 SOUTH MAIN STREET,
NEWMARKET, NH 03857

ISSUED:
CONSTRUCTION DOCUMENTS

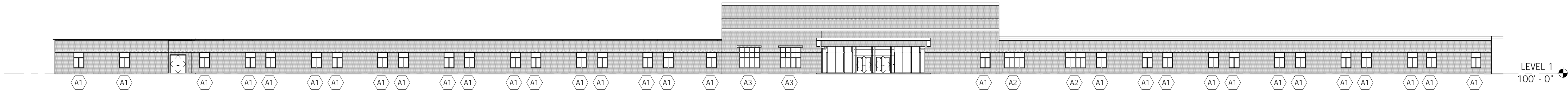
DRAWING:
EXISTING WINDOW REPLACEMENT

PROJECT NO: 22-921 **DATE:** 5/10/22
SHEET NUMBER:

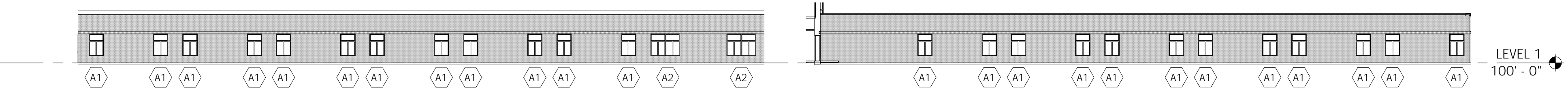
A600.2



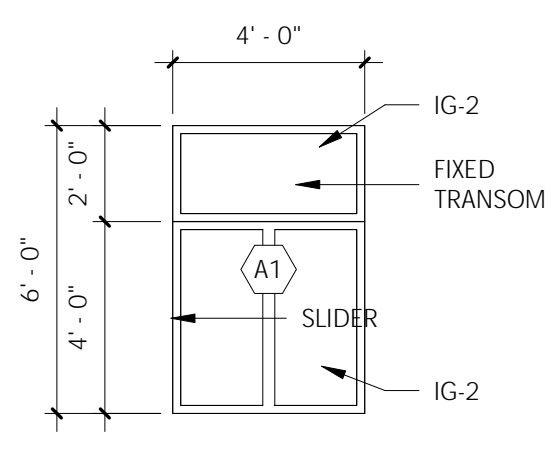
F8^E
Scale: 3/64" = 1'-0"



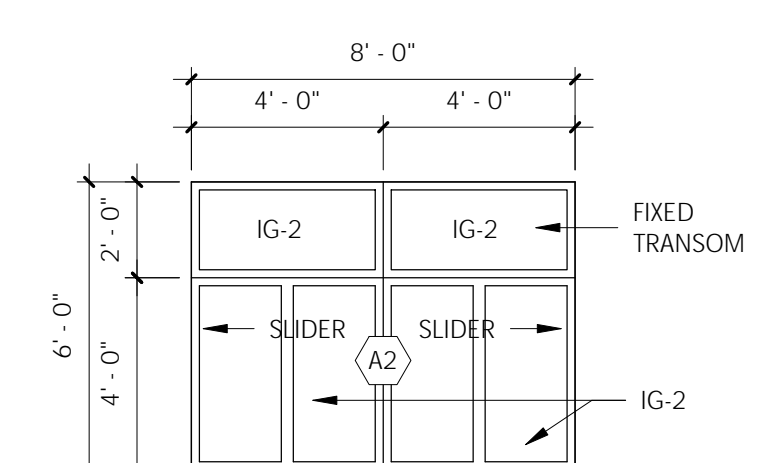
F6^N
Scale: 3/64" = 1'-0"



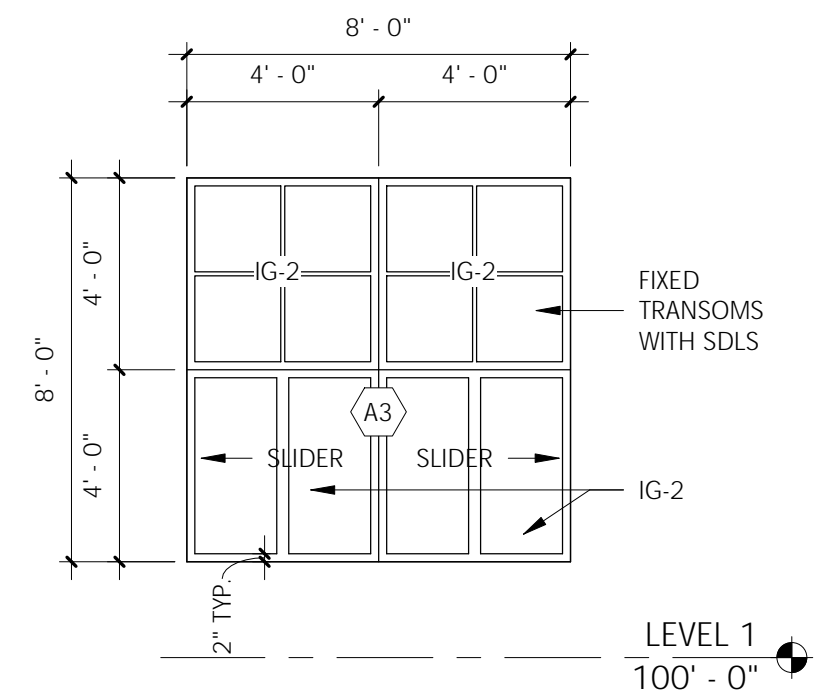
E5^{S1}
Scale: 3/64" = 1'-0"



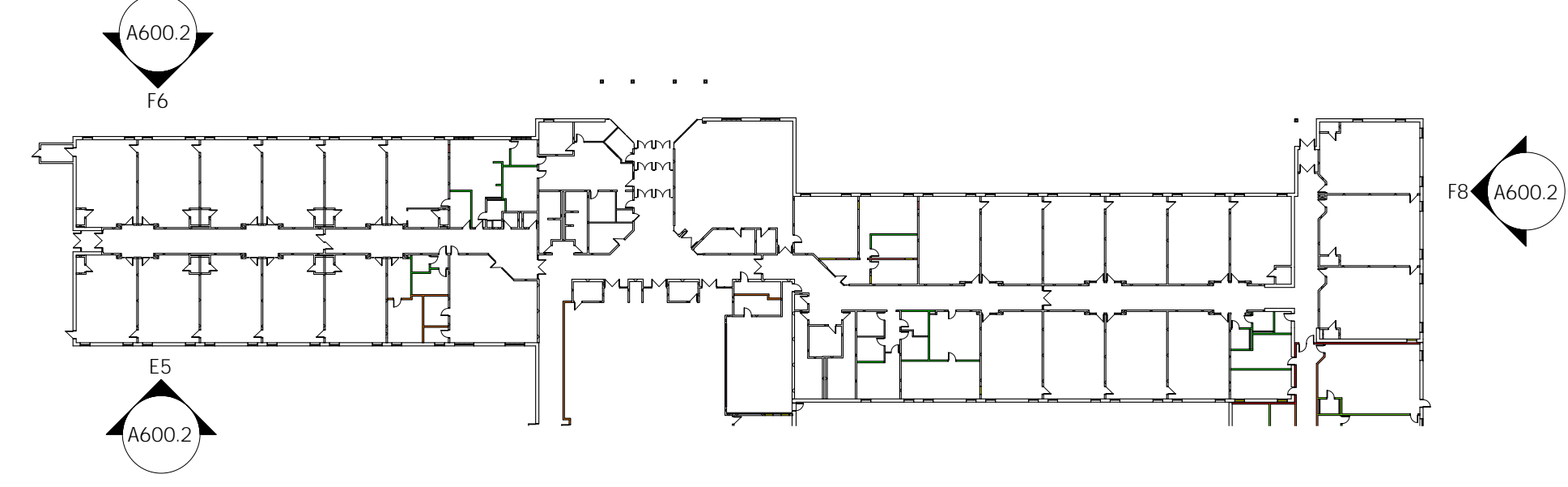
WINDOW TYPE A1 (FIBERGLASS) EXISTING REPLACEMENT



WINDOW TYPE A2 (FIBERGLASS) EXISTING REPLACEMENT

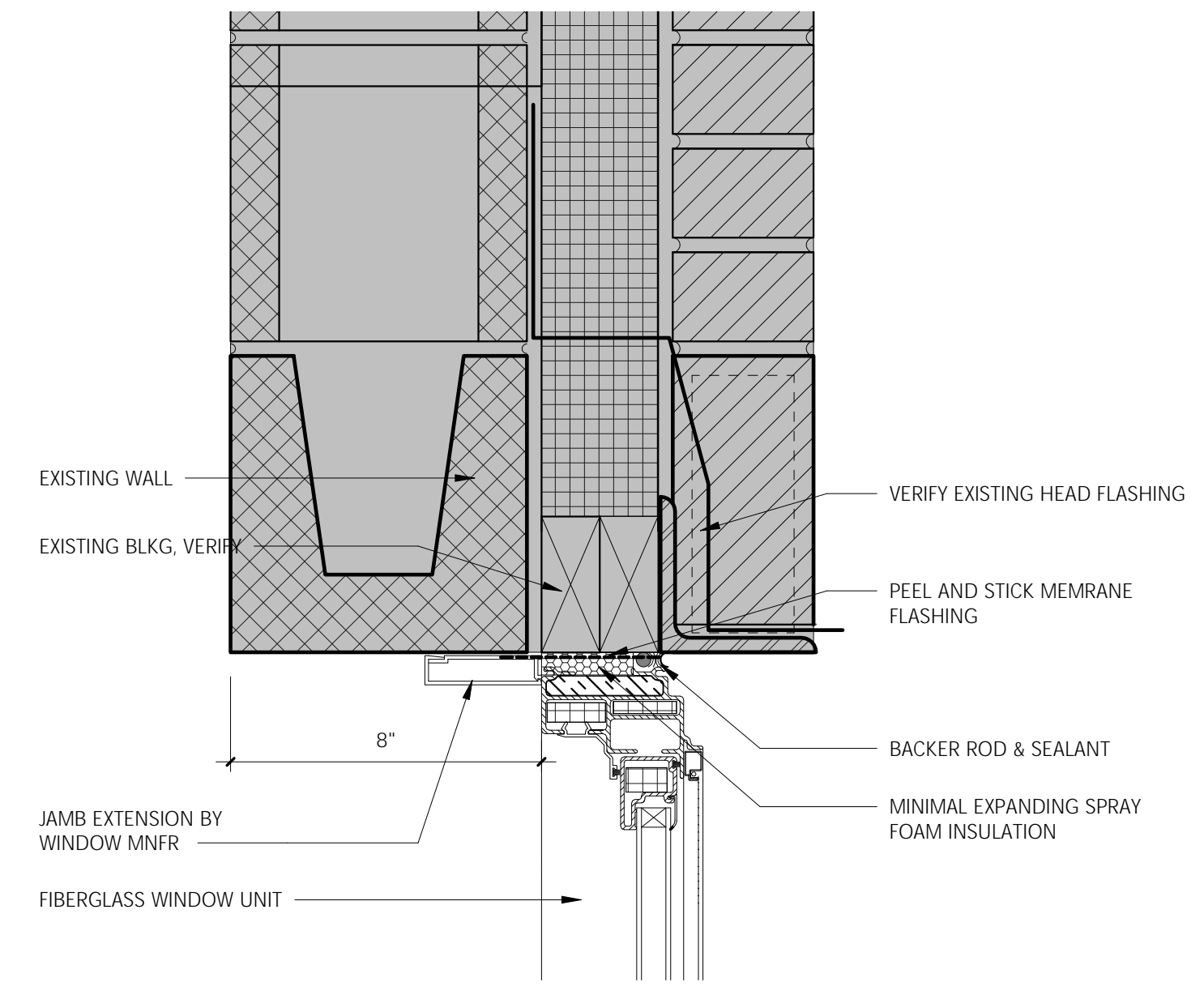


WINDOW TYPE A3 (FIBERGLASS) EXISTING REPLACEMENT

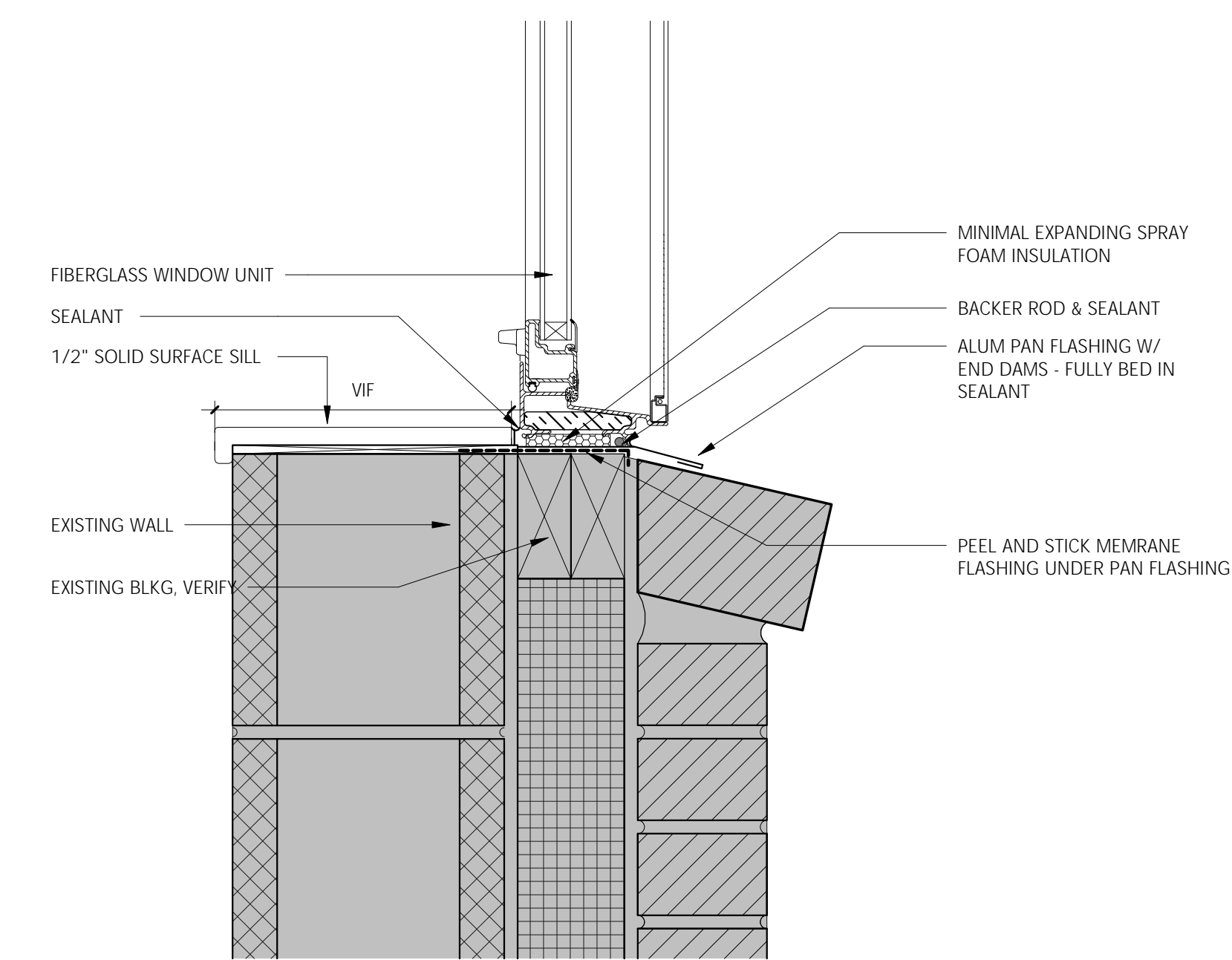


8 LEVEL 1 - FLOOR PLAN ELEVATION KEY
Scale: 1/64" = 1'-0"

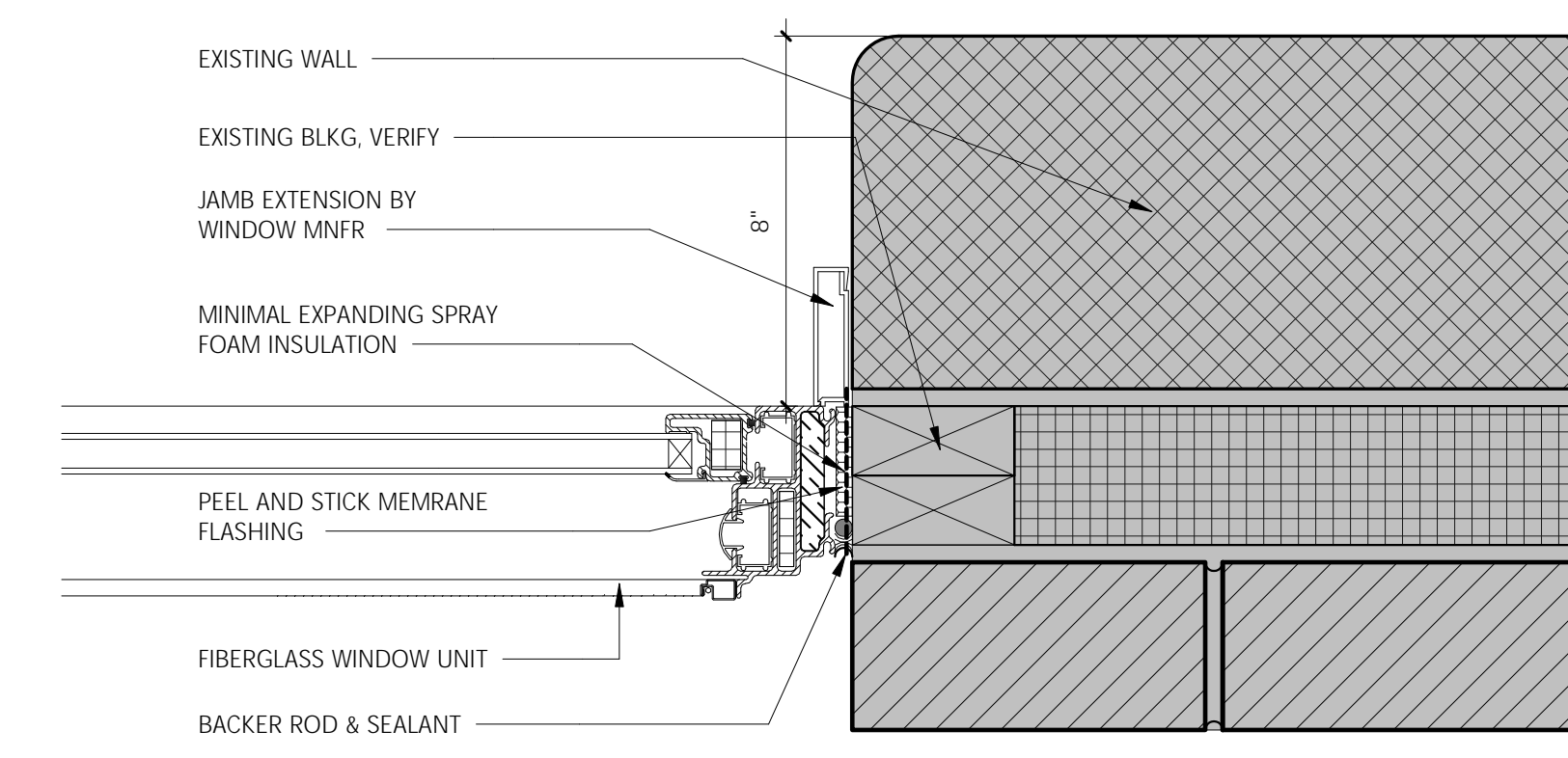
VERIFY ALL EXISTING ROUGH
OPENING SIZES IN FIELD



A8 TYP. WINDOW HEAD DETAIL P2
Scale: 3" = 1'-0"



A5 TYP. WINDOW SILL DETAIL P2
Scale: 3" = 1'-0"



A3 TYP. WINDOW JAMB DETAIL P2
Scale: 3" = 1'-0"