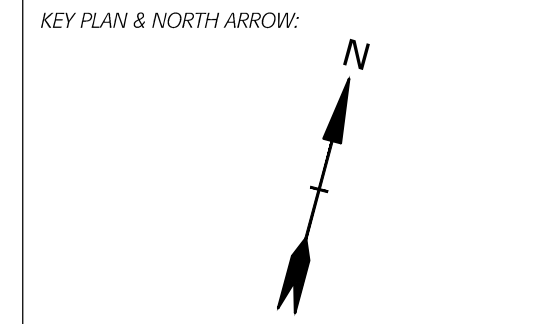




REVISION	DATE	COMMENTS
1.	2/15/18	ADDENDUM 4H
2.	4/16/18	BULLETIN 1H



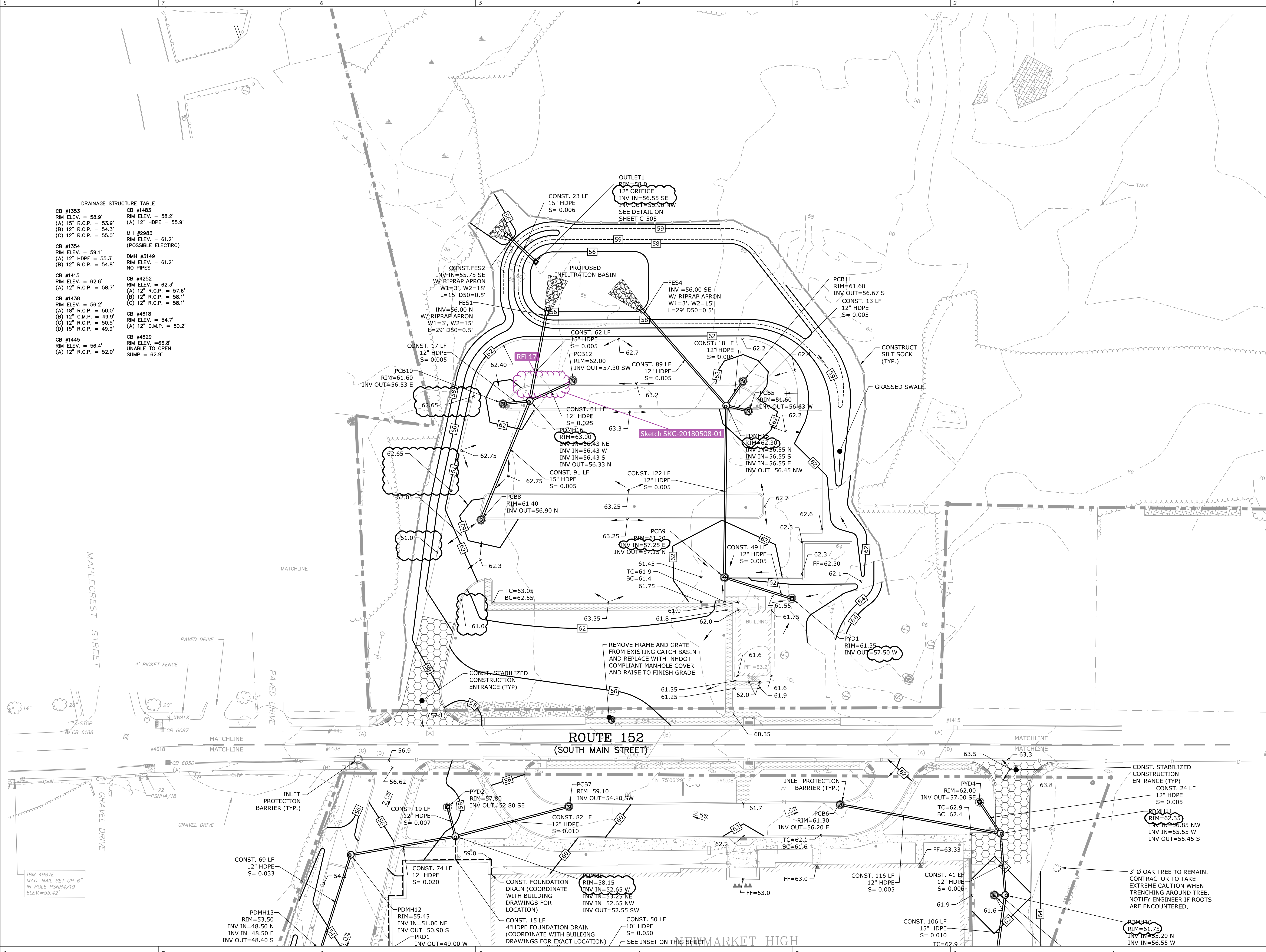
PROJECT:  
**NEWMARKET JUNIOR/  
SENIOR HIGH SCHOOL**  
213 S MAIN STREET  
NEWMARKET, NH 03857

ISSUED:  
BIDDING DOCUMENTS

DRAWING TITLE:  
**GRADING, DRAINAGE, &  
EROSION CONTROL PLAN**

PROJECT NO: 15-340 DATE: 1/12/2018  
SHEET NUMBER:

**C106H**



**DRAINAGE STRUCTURE TABLE**

CB #1353 RIM ELEV. = 58.9' (A) 15" R.C.P. = 53.9' (B) 12" R.C.P. = 54.3' (C) 12" R.C.P. = 55.0'	CB #1483 RIM ELEV. = 58.2' (A) 12" HDPE = 55.9'
CB #1354 RIM ELEV. = 59.1' (A) 12" HDPE = 55.3' (B) 12" R.C.P. = 54.8'	MH #2983 RIM ELEV. = 61.2' (POSSIBLE ELECTRIC)
CB #1415 RIM ELEV. = 62.6' (A) 12" R.C.P. = 58.7'	DMH #3149 RIM ELEV. = 61.2' NO PIPES
CB #1438 RIM ELEV. = 56.2' (A) 18" R.C.P. = 50.0' (B) 12" C.M.P. = 49.9' (C) 12" R.C.P. = 50.5' (D) 15" R.C.P. = 49.9'	CB #4252 RIM ELEV. = 62.3' (A) 12" R.C.P. = 57.6' (B) 12" R.C.P. = 58.1' (C) 12" R.C.P. = 58.1'
CB #1445 RIM ELEV. = 56.4' (A) 12" R.C.P. = 52.0'	CB #4618 RIM ELEV. = 54.7' (A) 12" C.M.P. = 50.2'
	CB #4629 RIM ELEV. = 66.8' UNABLE TO OPEN SUMP = 62.9'

Last Save Date: April 16, 2018 11:52 AM By: KAM  
 Plot Date: Monday, April 16, 2018 Plotted By: Kenneth A. Navarogorge  
 Tag File Location: J:\SIS2261 SAU 31 Newmarket, NH\Drawings, NH\Drawings, Figure\AutoCAD\Newmarket High School\Sheet\2261-1-C-HS-GRAD.dwg Layout Tab: C-106