

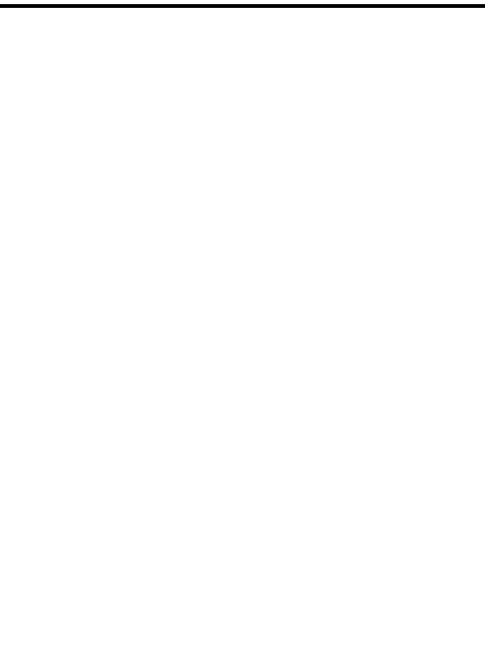
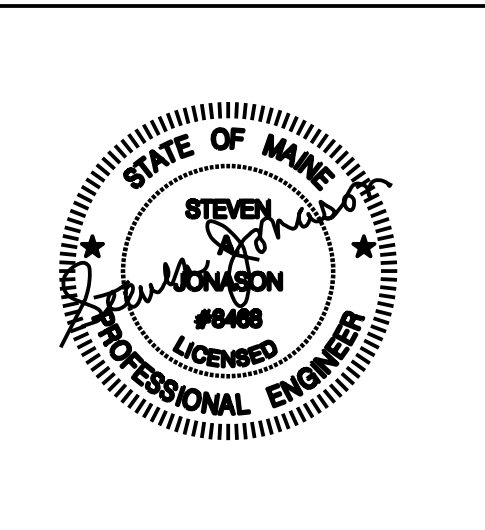
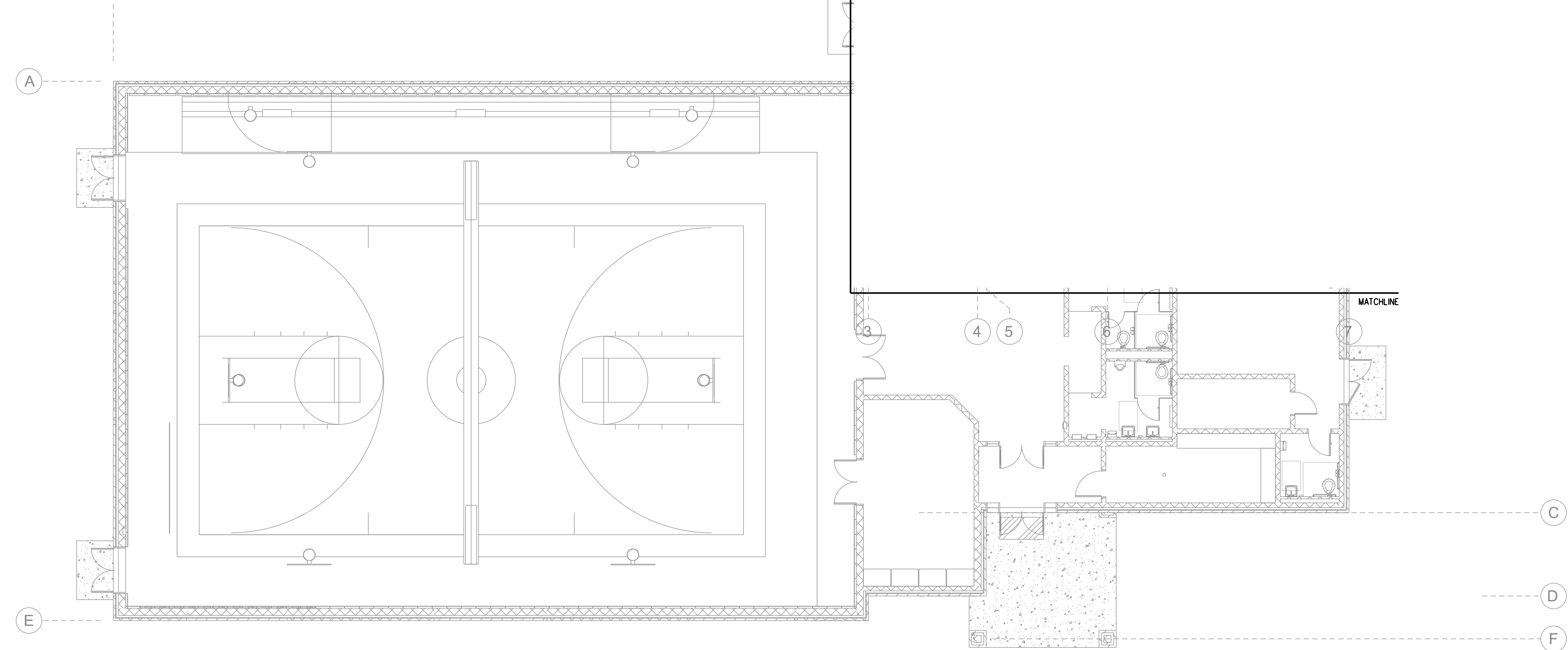
POWER WORK NOTES

① PROVIDE 20A QUAD RECEPTACLE; CONTRACTOR SHALL SURFACE MOUNT NEW RECEPTACLE AT 0'-18" AFF TO CENTERLINE OF DEVICE BOX.

② PROVIDE 20A DUPLEX RECEPTACLE; SURFACE MOUNT NEW RECEPTACLE ADJACENT TO WINDOW AT APPROXIMATELY 0'-36" AFF TO CENTERLINE OF DEVICE BOX; CONTRACTOR SHALL FIELD VERIFY AND COORDINATE FINAL MOUNTING HEIGHT WITH EXISTING CONDITIONS.

③ CONTRACTOR SHALL PROVIDE 45A 3-POLE BREAKER IN EXISTING MDP TO FEED NEW 480V DELTA PRIMARY TO 208Y/120V SECONDARY 30 KVA TRANSFORMER; TRANSFORMER SHALL FEED NEW 800A 120/208V ELECTRICAL PANEL; NP1A PRIMARY CONDUCTORS: (3) #3 + #8GND IN 3/4" C. SECONDARY CONDUCTORS: (4) #3 + #8GND IN 1 1/4" C.

FIRST FLOOR: AREA A
SCALE: 3/32" = 1'-0"



NEWMARKET ELEMENTARY
ELECTRICAL UPGRADES
NEWMARKET, NH

Date Drawn - 03-22-22

Drawn By - CAT/SAJ

Project • 4787

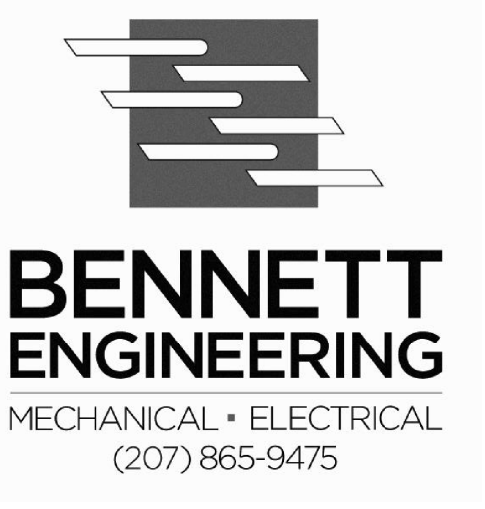
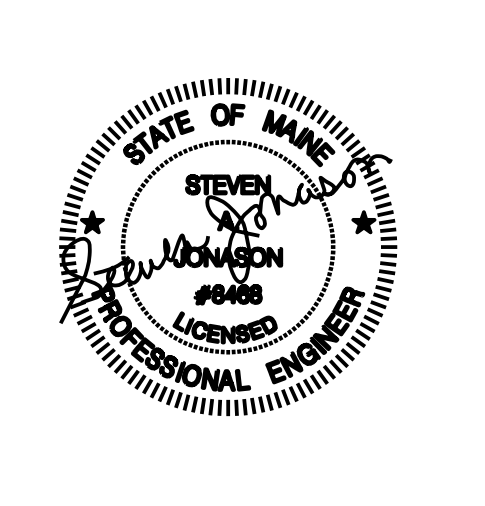
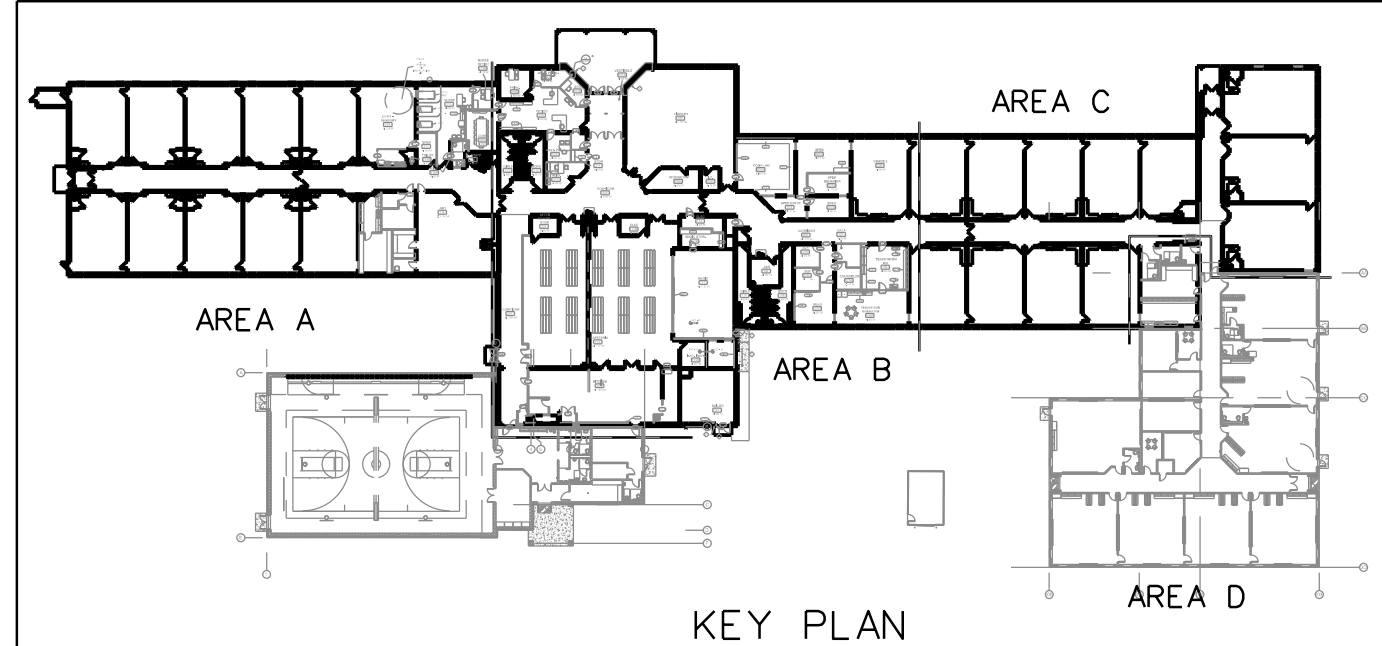
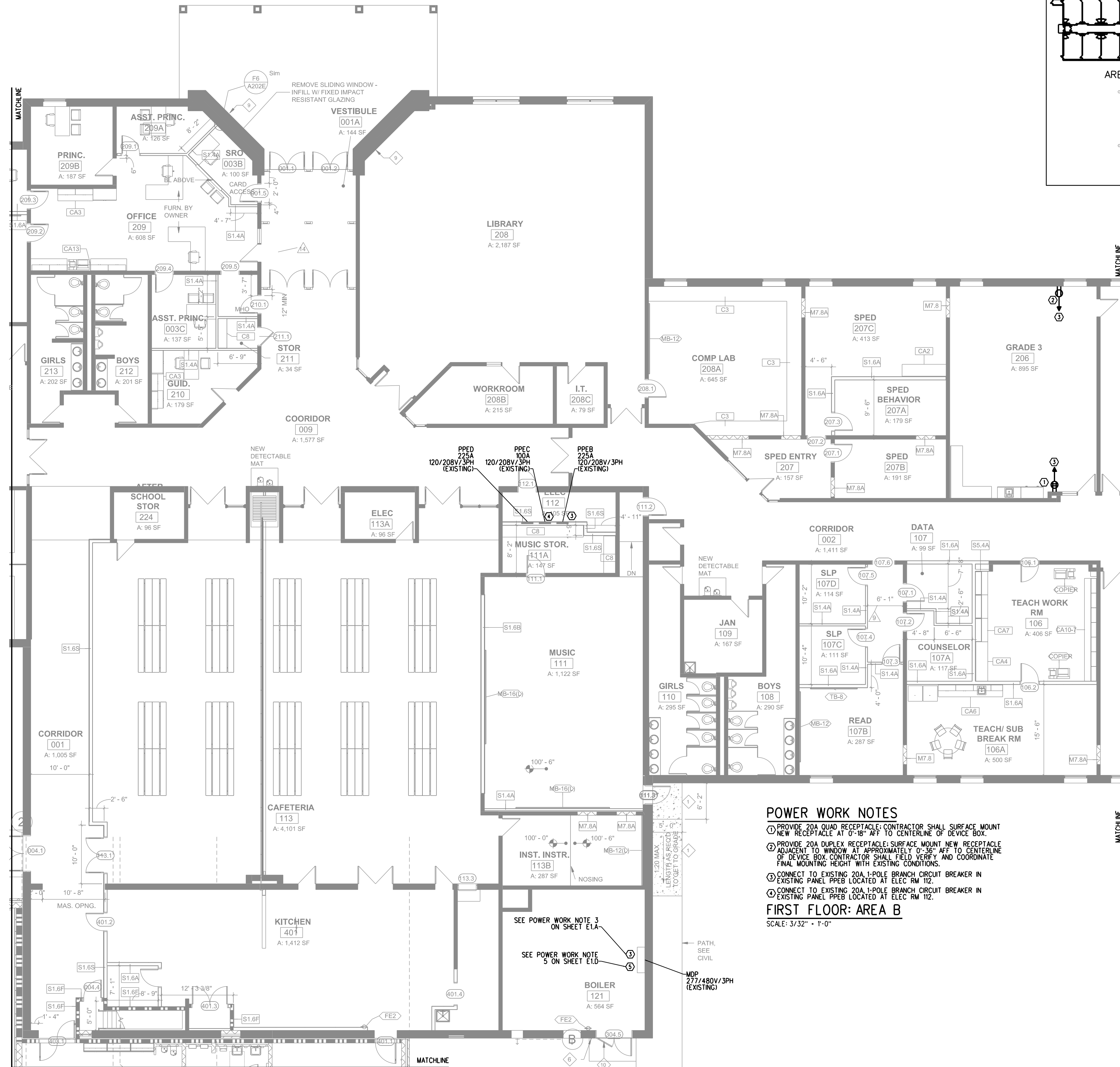
Scale - AS NOTED

Revised -

SHEET TITLE

First Floor Power Plan: Area A

E.I.A



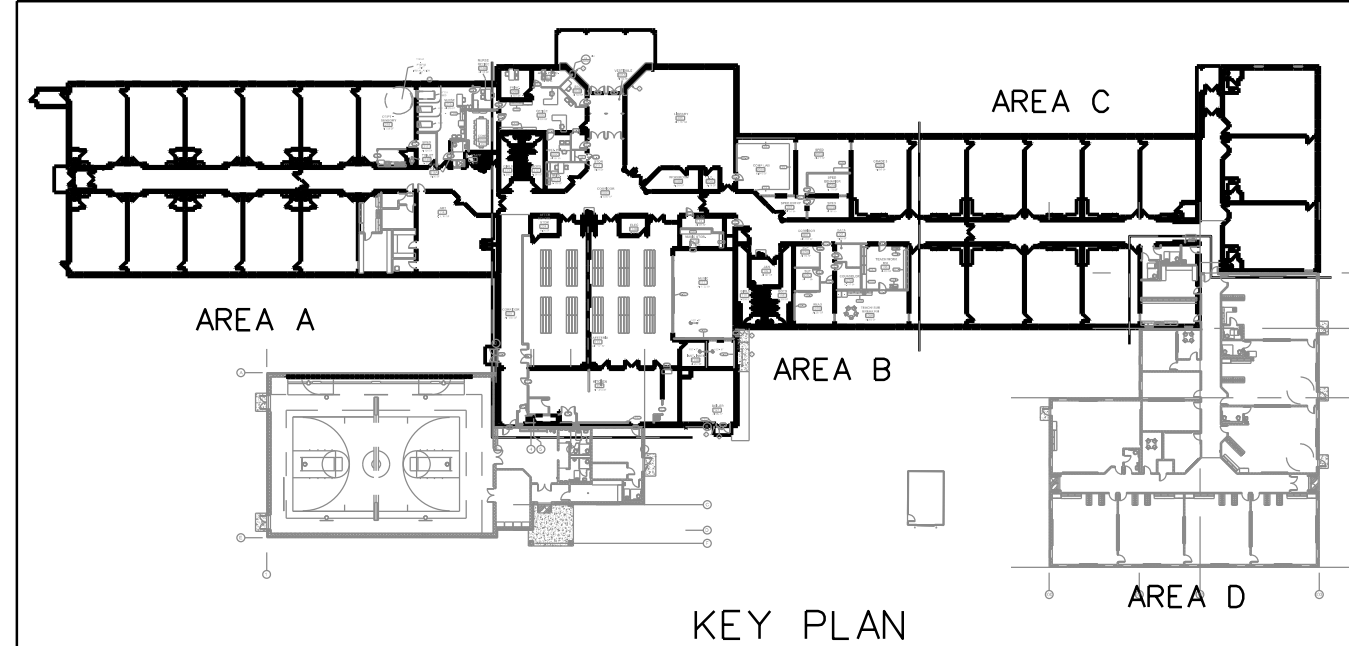
NEWMARKET ELEMENTARY
ELECTRICAL UPGRADES
NEWMARKET, NH

Date Drawn - 03-22-22
 Drawn By - CAT/SAJ
 Project • 4787
 Scale - AS NOTED
 Revised -

SHEET TITLE
**First Floor Power
 Plan: Area B**

EI.B

POWER WORK NOTES
 ① PROVIDE 20A QUAD RECEPTACLE; CONTRACTOR SHALL SURFACE MOUNT NEW RECEPTACLE AT 0'-96" AFF TO CENTERLINE OF DEVICE BOX.
 ② PROVIDE 20A DUPLEX RECEPTACLE; SURFACE MOUNT NEW RECEPTACLE ADJACENT TO WINDOW AT APPROXIMATELY 0'-36" AFF TO CENTERLINE OF DEVICE BOX; CONTRACTOR SHALL FIELD VERIFY AND COORDINATE FINAL MOUNTING HEIGHT WITH EXISTING CONDITIONS.
 ③ CONNECT TO EXISTING 20A 1-POLE BRANCH CIRCUIT BREAKER IN EXISTING PANEL PPEB LOCATED AT ELEC RM 112.
 ④ CONNECT TO EXISTING 20A 1-POLE BRANCH CIRCUIT BREAKER IN EXISTING PANEL PPEB LOCATED AT ELEC RM 112.
FIRST FLOOR: AREA B
 SCALE: 3/32" = 1'-0"



POWER WORK NOTES

① PROVIDE 20A QUAD RECEPTACLE CONTRACTOR SHALL SURFACE MOUNT NEW RECEPTACLE AT 0'-8" AFF TO CENTERLINE OF DEVICE BOX.

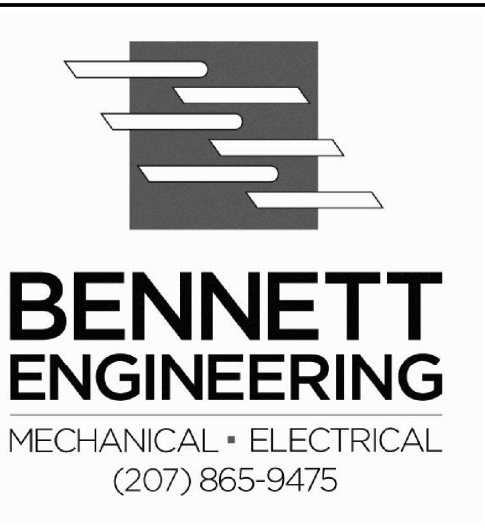
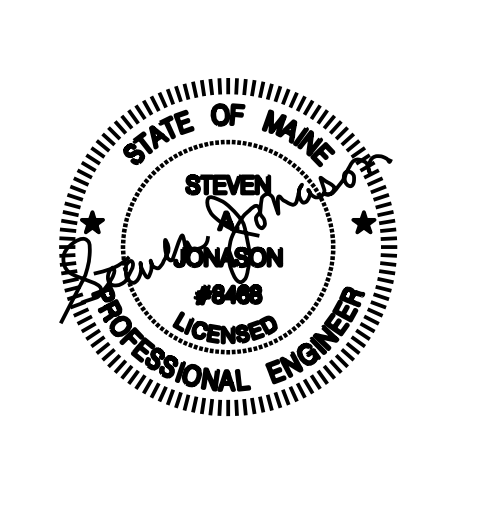
② PROVIDE 20A DUPLEX RECEPTACLE SURFACE MOUNT NEW RECEPTACLE ADJACENT TO WINDOW AT APPROXIMATELY 0'-36" AFF TO CENTERLINE OF DEVICE BOX CONTRACTOR SHALL FIELD VERIFY AND COORDINATE FINAL MOUNTING HEIGHT WITH EXISTING CONDITIONS.

③ CONNECT TO EXISTING 20A 1-POLE BRANCH CIRCUIT BREAKER IN EXISTING PANEL PREC LOCATED AT ELEC RM 112.

④ CONNECT TO EXISTING 20A 1-POLE BRANCH CIRCUIT BREAKER IN EXISTING PANEL PREC LOCATED AT ELEC RM 112.

FIRST FLOOR: AREA C

SCALE: 3/32" = 1'-0"



NEWMARKET ELEMENTARY
ELECTRICAL UPGRADES
NEWMARKET, NH

Date Drawn - 03-22-22

Drawn By - CAT/SAJ

Project • 4787

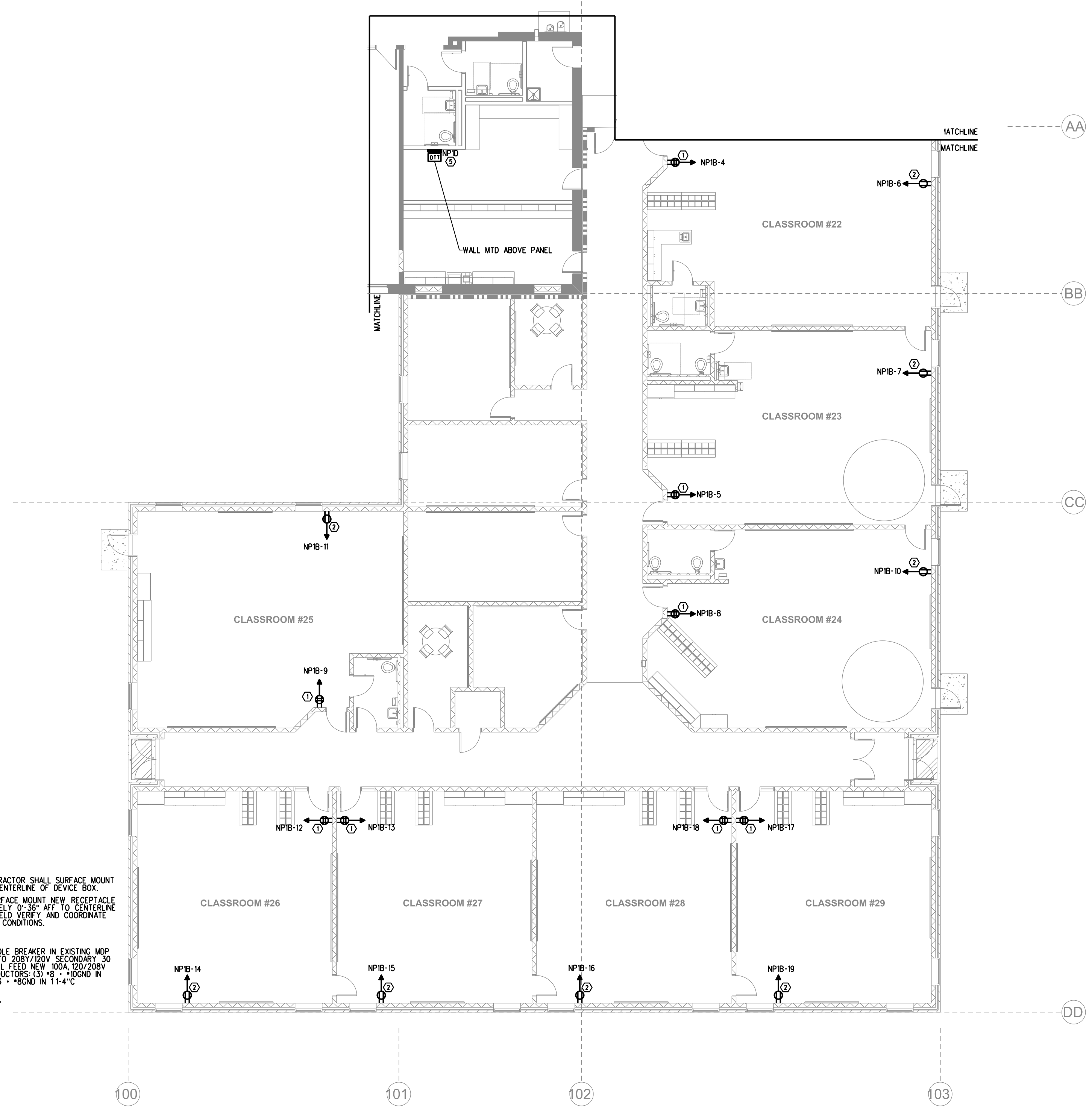
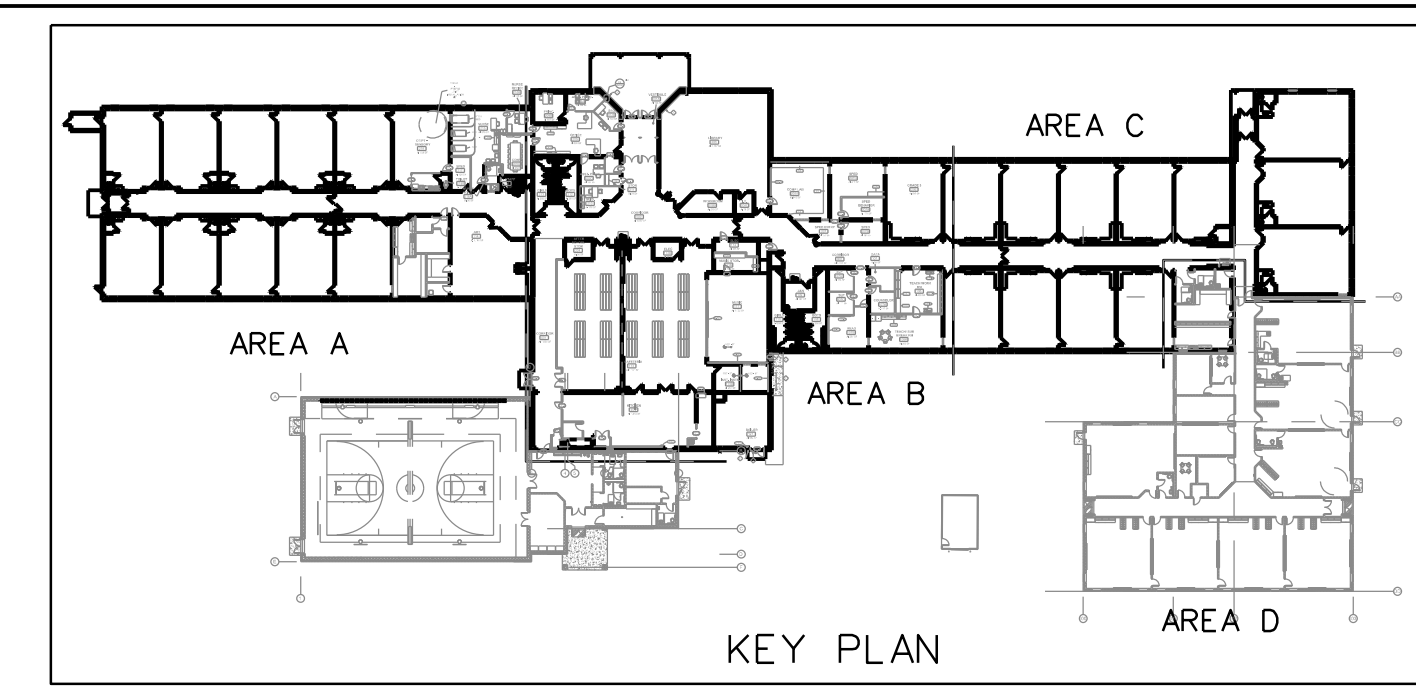
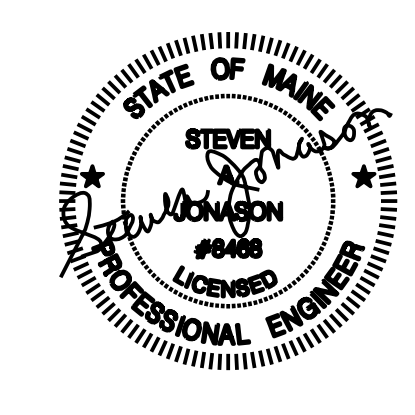
Scale - AS NOTED

Revised -

SHEET TITLE

First Floor Power
Plan: Area C

E.I.C



POWER WORK NOTES

① PROVIDE 20A QUAD RECEPTACLE; CONTRACTOR SHALL SURFACE MOUNT NEW RECEPTACLE AT 0'-18" AFF TO CENTERLINE OF DEVICE BOX.

② PROVIDE 20A DUPLEX RECEPTACLE; SURFACE MOUNT NEW RECEPTACLE ADJACENT TO WINDOW AT APPROXIMATELY 0'-56" AFF TO CENTERLINE OF DEVICE BOX; CONTRACTOR SHALL FIELD VERIFY AND COORDINATE FINAL MOUNTING HEIGHT WITH EXISTING CONDITIONS.

③/④ NOT USED.

⑤ CONTRACTOR SHALL PROVIDE 45A 3-POLE BREAKER IN EXISTING MDP TO FEED NEW 480V DELTA PRIMARY TO 208Y/120V SECONDARY 30 KVA TRANSFORMER; TRANSFORMER SHALL FEED NEW 800A 120/208V ELECTRICAL PANEL; NEMA PRIMARY CONDUCTORS: 131 #8 - 10GND IN 3/4" C; SECONDARY CONDUCTORS: (4) #3 - 10GND IN 1 1/4" C.

FIRST FLOOR: AREA D

SCALE: 3/32" = 1'-0"

NEWMARKET ELEMENTARY
ELECTRICAL UPGRADES
NEWMARKET, NH

Date Drawn - 03-22-22
 Drawn By - CAT/SAJ
 Project - 4787
 Scale - AS NOTED
 Revised -

SHEET TITLE
First Floor Power
Plan: Area D

E.I.D

ABBREVIATIONS

A	AMP	LTG	LIGHTING
AC	ALTERNATING CURRENT, ABOVE COUNTER	LSIG	LONG TIME, SHORT TIME, INSTANTANEOUS, GROUND FAULT CIRCUIT BREAKER TRIP FUNCTIONS AS INDICATED
ADA	AMERICANS WITH DISABILITIES ACT	MCC	MOTOR CONTROL CENTER
AF	AMP FRAME	MCCB	MOLDED CASE CIRCUIT BREAKER
AFCI	ARC FAULT CIRCUIT INTERRUPTER	MCB	MAIN CIRCUIT BREAKER
AFF	ABOVE FINISHED FLOOR	MDP	MAIN DISTRIBUTION PANEL
AFC	ABOVE FINISHED GRADE	MH	MANHOLE
AIC	AMPERES INTERRUPTING CAPACITY	MIS	MANAGEMENT INFORMATION SYSTEM
AL	ALUMINUM	MLO	MAIN LUGS ONLY
AT	AMP TRIP	MTS	MANUAL TRANSFER SWITCH
ATC	AUTOMATIC TEMPERATURE CONTROL	NC	NORMALLY CLOSED OF NURSE CALL
ATS	AUTOMATIC TRANSFER SWITCH	NEC	NATIONAL ELECTRICAL CODE
AWG	AMERICAN WIRE GAUGE	NFPA	NATIONAL FIRE PROTECTION ASSOCIATION
BLDG	BUILDING	NL	NIGHT LIGHT
C	CONDUIT	NO	NORMALLY OPEN
CB	CIRCUIT BREAKER	NO.	NUMBER
CI	CAST IRON	OL	OVERLOAD
CKT	CIRCUIT	P	POLE
CL	CENTERLINE	PA	PUBLIC ADDRESS
CMP	CENTRAL MAINE POWER (ELECTRIC UTILITY)	PB	PUSH BUTTON
CMU	CONCRETE MASONRY UNIT	PF	POWER FACTOR
CT	CURRENT TRANSFORMER	PH	PHASE
CONC	CONCRETE	PNL	PANEL
CS	CARBON STEEL	TP1-2	TELE-POWER POLE - POLE AND CIRCUIT NUMBER AS INDICATED
CU	COPPER	PSNH	PUBLIC SERVICE OF NEW HAMPSHIRE (ELECTRIC UTILITY)
CUH	CABINET UNIT HEATER	PT	POTENTIAL TRANSFORMER
DL	DAMP LOCATION	PVC	POLYVINYL CHLORIDE
EC	ELECTRICAL CONTRACTOR	RL	ELECTRICAL EQUIPMENT TO BE RELOCATED
EF	EXHAUST FAN	RM	ELECTRICAL EQUIPMENT TO REMAIN
ERL	EXISTING RELOCATE	RSC	RIGID STEEL CONDUIT
ERV	EXISTING REMOVE	RTU	ROOF TOP UNIT
ETR	EXISTING TO REMAIN	RV	ELECTRICAL EQUIPMENT TO REMOVE
EUH	ELECTRIC UNIT HEATER	RVNR	REDUCED VOLTAGE, NON-REVERSING
EWC	ELECTRICAL WATER COOLER	SB	SMART BOARD
FACP	FIRE ALARM CONTROL PANEL	SF	SUPPLY FAN
FAPS	FIRE ALARM PULL STATION	SLD	SINGLE LINE DIAGRAM
FRP	FIBER REINFORCED PLASTIC	SM	MANUAL MOTOR STARTER SWITCH WITH THERMAL OVERLOAD DEVICE, MOUNTED AT UNIT
FVNR	FULL VOLTAGE, NON-REVERSING	SS	SOLID STATE
FWU	FURNISHED WITH UNIT	SWBD-1	SWITCHBOARD NUMBER AS DESIGNATED
DC	DIRECT CURRENT	TC	TIME CLOCK
GFI	GROUND FAULT INTERRUPTER	TS	TRANSFER SWITCH
GND	GROUND	T&B	TOP AND BOTTOM
HID	HIGH INTENSITY DISCHARGE	TYP	TYPICAL
HOA	HAND-OFF-AUTOMATIC	UG	UNDERGROUND
HP	HORSEPOWER	V	VOLT
HPS	HIGH PRESSURE SODIUM	VA	VOLT-AMPERE
HZ	HERTZ	VFD	VARIABLE FREQUENCY DRIVE
ICB	INSULATED CASE CIRCUIT BREAKER	W	WATT
JB	JUNCTION BOX	W/	WITH
KAIC	THOUSAND AMP INTERRUPTING CAPACITY	WP	WEATHERPROOF
KCML	THOUSAND CIRCULAR MIL	XFMR	TRANSFORMER
KV	THOUSAND VOLTS	XP	EXPLOSION PROOF
KVA	THOUSAND VOLT-AMPS	3PH	THREE PHASE
KW	THOUSAND WATTS (KILOWATT)	4W	FOUR WIRE
LC	LIGHTING CONTACTORS	3W	THREE WIRE
LCP	LIGHTING CONTROL PANEL		
LED	LIGHT EMITTING DIODE		
LP	LIGHTING PANELBOARD		

PANEL NP1A (TEACHER STORAGE RM) 120/208 3PH 4W 100 AMP MLO 42K AIC NEMA TYPE 1 (SURFACE)															
CKT #	LOAD DESCRIPTION	AT	P	CA	DF	DA	VA	CKT #	LOAD DESCRIPTION	AT	P	CA	DF	DA	VA
1	NEW QUAD AT ENTRY: CLASSRM #1	20	1	3	1.00	3	360	2	NEW QUAD AT ENTRY: CLASSRM #2	20	1	3	1.00	3	360
3	NEW QUAD AT ENTRY: CLASSRM #3	20	1	3	1.00	3	360	4	NEW QUAD AT ENTRY: CLASSRM #4	20	1	3	1.00	3	360
5	NEW DUPLEX AT WINDOW: CLASSRM #3	20	1	14	1.00	14	1681	6	NEW DUPLEX AT WINDOW: CLASSRM #4	20	1	14	1.00	14	1681
7	NEW QUAD AT ENTRY: CLASSRM #5	20	1	3	1.00	3	360	8	NEW QUAD AT ENTRY: CLASSRM #6	20	1	3	1.00	3	360
9	NEW DUPLEX AT WINDOW: CLASSRM #5	20	1	14	1.00	14	1681	10	NEW DUPLEX AT WINDOW: CLASSRM #6	20	1	14	1.00	14	1681
11	NEW QUAD AT ENTRY: CLASSRM #7	20	1	3	1.00	3	360	12	NEW QUAD AT ENTRY: CLASSRM #8	20	1	3	1.00	3	360
13	NEW DUPLEX AT WINDOW: CLASSRM #7	20	1	14	1.00	14	1681	14	NEW DUPLEX AT WINDOW: CLASSRM #8	20	1	14	1.00	14	1681
15	NEW QUAD AT ENTRY: CLASSRM #9	20	1	3	1.00	3	360	16	NEW QUAD AT ENTRY: CLASSRM #10	20	1	3	1.00	3	360
17	NEW DUPLEX AT WINDOW: CLASSRM #9	20	1	14	1.00	14	1681	18	NEW DUPLEX AT WINDOW: CLASSRM #10	20	1	14	1.00	14	1681
19	SPARE	20	1			0	0	20	SPARE	20	1			0	0
21	SPARE	20	1			0	0	22	SPARE	20	1			0	0
23						0	0	24						0	0
25						0	0	26						0	0
27						0	0	28						0	0
29						0	0	30						0	0
31						0	0	32						0	0
33						0	0	34						0	0
35						0	0	36						0	0
37						0	0	38						0	0
39						0	0	40						0	0
41						0	0	42						0	0

AT - Amp Trip
P - Poles
A - Amps
CA - Connected Amperes
DF - Demand Factor (1 - 1)
DA - Demand Amperes
DW - Demand Watts
MLO - Main Lug Only
MCB - Main Circuit Breaker

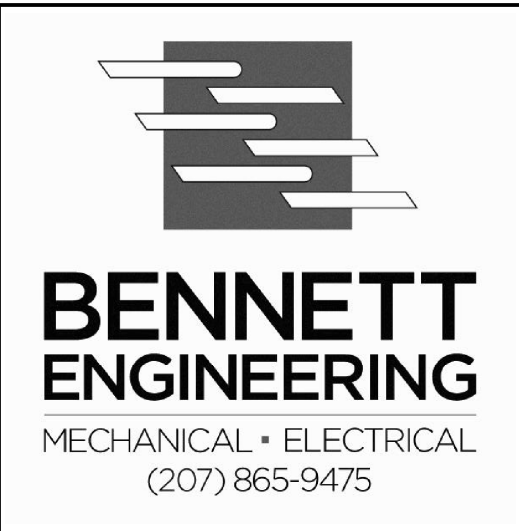
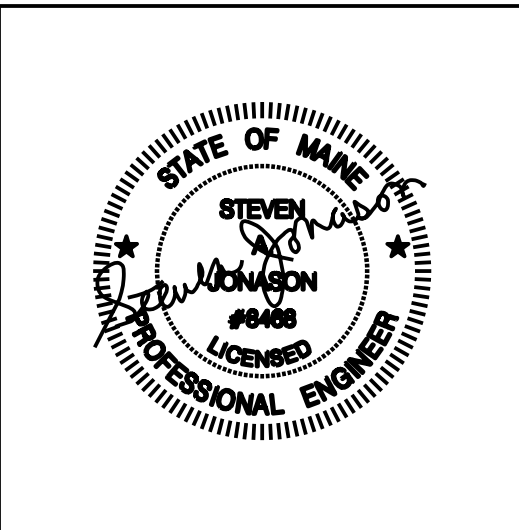
GENERAL NOTES

- NOT ALL SYMBOLS INDICATED IN THE LEGEND APPEAR ON THE DRAWINGS. COORDINATE WORK ACCORDINGLY. COMPLY WITH SPECIFICATIONS AND NOTES BELOW AS APPLICABLE.
- ALL RECEPTACLES SHALL BE INSTALLED 18" AFF TO CENTERLINE OF BOX UNLESS NOTED OTHERWISE.
- ALL WIRING SHALL BE COPPER UNLESS DESIGNATED AS "AL". UNLESS OTHERWISE NOTED - ALL WIRING SHALL BE #12 AWG AND #12 EQUIPMENT GROUNDING CONDUCTOR. HOMERUNS FED FROM A 20A-1P, 120V CIRCUIT IN EXCESS OF 70' SHALL BE #10 AWG.
- FUSES AND OVERLOAD UNITS FOR MOTORS SHALL BE SIZED BASED ON ACTUAL MOTOR NAMEPLATE DATA AND IN ACCORDANCE WITH NEC. CIRCUIT BREAKERS FOR MOTORS ARE SUPPLIED AT MAX VALUE PER NEC (2.5 x FLA). SIZE IN THE FIELD IN ACCORDANCE WITH MFR RECOMMENDATION.
- ALL WORK SHALL COMPLY WITH NFPA70, NFPA72, NFPA101 & ALL FEDERAL, STATE & LOCAL REGULATIONS.
- ALL PENETRATIONS THROUGH FLOORS, RATED WALLS AND PARTITIONS SHALL BE SEALED WITH UL APPROVED FIRE SEALANT MATERIAL TO MAINTAIN FIRE RATING FOR THE SEPARATION.
- AN EQUIPMENT GROUNDING CONDUCTOR SHALL BE INSTALLED WITH ALL FEEDERS AND BRANCH CIRCUITS. SIZE IN ACCORDANCE WITH NFPA 70 ARTICLE 250.
- LOCATE DISCONNECTS AT EQUIPMENT AS REQUIRED BY MANUFACTURER. LOCATIONS ON DRAWINGS ARE APPROXIMATE.
- PROVIDE RISER OR PLENUM RATED CABLES ABOVE SUSPENDED CEILINGS.
- THE CONTRACTOR SHALL SET ALL ELECTRONIC BREAKERS TO SPECIFIED TRIP SETTINGS BEFORE ENERGIZING EQUIPMENT.
- PROVIDE EXPANSION FITTINGS FOR ALL UNDERGROUND RACEWAYS ENTERING ENCLOSURES ATTACHED TO FIXED STRUCTURES.
- ALL CONDUCTOR INSULATION FOR BUILDING WIRE SHALL BE THWN/THHN UNLESS NOTED OTHERWISE.
- PROVIDE LABEL ON SERVICE EQUIPMENT INDICATING AVAILABLE SHORT CIRCUIT CURRENT OBTAIN VALUES FROM ENGINEER.
- PROVIDE ARC FAULT LABELS PER NFPA 70-ARTICLE 110.24
- OUTLETS INSTALLED IN FIRE RATED WALLS BACK TO BACK SHALL BE SEPARATED BY 24" MINIMUM OR BE PROTECTED WITH "PUTTY PADS" PER 2009 INTERNATIONAL BUILDING CODE SECTION 713.3.2
- PROVIDE AIR VAPOR BARRIER BOXES FOR WIRING DEVICES IN EXTERIOR WALLS AND INTERIOR SOUND CONTROL WALLS BETWEEN RESIDENT ROOMS. INSTALL PER MANUFACTURER'S INSTRUCTIONS. PROVIDE LESSCO MODEL NUMBER: VAPORBOX
- MINIMUM WIRE SIZE ON ALL BRANCH CIRCUITS SHALL BE #12.

SYMBOL LEGEND

- SURFACE MOUNTED POWER PANEL, SEE PANEL SCHEDULES FOR RATING
- RECESSED MOUNTED POWER PANEL, SEE PANEL SCHEDULES FOR RATING
- ELECTRIC MOTOR DRIVEN EQUIPMENT, HP SHOWN
- H, DS, DW JUNCTION BOX, "H" DENOTES RANGE HOOD, "DS" DENOTES DISPOSAL UNIT, "DW" DENOTES DISHWASHER
- SM MANUAL MOTOR STARTER SWITCH WITH THERMAL OVERLOAD DEVICE MOUNTED AT UNIT
- DISCONNECT SWITCH, SIZE AND NUMBER OF POLES AS INDICATED ON DRAWING PROVIDED BY EC UNLESS NOTED OTHERWISE. PROVIDE FUSES WHERE RECOMMENDED BY MANUFACTURER.
- COMBINATION MOTOR STARTER/ DISCONNECT SWITCH WITH AUXILIARY CONTACTS AND HAND-OFF-AUTO SWITCH AND RED RUN LIGHT, PROVIDED AND INSTALLED BY EC UNLESS NOTED OTHERWISE.
- VFD VARIABLE FREQUENCY DRIVE, PROVIDED BY MC, INSTALLED AND WIRED BY EC
- DUPLEX RECEPTACLE, 20A, 125V SPEC GRADE GROUNDING TYPE, TAMPER PROOF AND MATCHING PLATE, MOUNT 18" AFF UNLESS NOTED OTHERWISE. "AC" - MOUNTED WITHIN 6" OF COUNTERTOP "SW" - DENOTES SWITCHED OUTLET "NL" - EQUIPPED WITH NIGHTLIGHT LEGRAND *NTL885TRIC6 OR EQUAL
- QUAD RECEPTACLE, 20A, 125V SPEC GRADE GROUNDING TYPE, TAMPER PROOF AND MATCHING PLATE, MOUNT 18" AFF UNLESS NOTED OTHERWISE.
- DUPLEX RECEPTACLE, 20A, 125V SPEC GRADE GROUNDING TYPE, TAMPER PROOF AND MATCHING PLATE, MOUNT 18" AFF, BOTTOM RECEPTACLE SWITCHED.
- GROUND FAULT DUPLEX RECEPTACLE 20A, 125V, TAMPER PROOF WITH MATCHING PLATE, FURNISHED W/ OUTLET, FLUSH MOUNTED 45" AFF UNLESS OTHERWISE NOTED.
- REFRIGERATOR DUPLEX RECEPTACLE, 20A, 125V SPEC GRADE GROUNDING TYPE, TAMPER PROOF WITH (2) USB CHARGING PORTS, COLOR BY ARCH, MOUNT 18" AFF UNLESS NOTED OTHERWISE.
- CL FLUSH FLOOR MOUNTED DUPLEX RECEPTACLE- 20A, 125V SPEC GRADE GROUNDING TYPE. "CL" DENOTES CEILING MOUNTED
- RANGE OUTLET 50 AMP, 250 VOLT, GROUNDING TYPE FLUSH MOUNTED 18" AFF
- DRYER OUTLET 30 AMP, 240 VOLT, GROUNDING TYPE NEMA 14-30R 4-PRONG RECEPTACLE, FLUSH MOUNTED 18" AFF
- RACEWAY & WIRING OR MC CABLE RUN CONCEALED IN WALLS/CEILINGS
RACEWAY & WIRING RUN EXPOSED
RACEWAY & WIRING RUN CONCEALED UNDER FLOOR OR BURIED 30" BELOW FINISH GRADE
HOME RUN TO PANEL, WITH PANEL AND CIRCUIT NUMBER
- BRANCH CIRCUIT WIRING SHALL CONSIST OF (1)1/2"C-2*12AWG-1*12GND UNLESS OTHERWISE NOTED. (+)ASTERISK DENOTES #10AWG FOR ALL CIRCUITS CONTAINED IN HOME RUN. (**)DOUBLE ASTERISK DENOTES (1)3/4"C-2*8AWG-1*10GND.
- PROVIDE EQUIPMENT GROUNDS IN ACCORDANCE WITH NFPA 70, ARTICLE 250.
- SWs WALL MOUNTED SWITCH MOTION SENSOR, MOUNT AT 48" AFF UNLESS OTHERWISE NOTED
- SS SINGLE POLE SWITCH, 120V, 20A, SPEC GRADE, GROUNDING TYPE, MOUNT 48" AFF, 3-3-WAY, 4-4-WAY, LOWER CASE LETTER INDICATES FIXTURE OR CONTROLLED LOAD.
- SL SWITCH WITH PILOT LIGHT, SWITCH SHALL BE PROVIDED W/ ENGRAVED NAMEPLATE IDENTIFYING USE
- Srf REMOTE RANGE HOOD FAN SWITCH, CONNECT TO HOOD FAN THRU HOOD JUNCTION BOX.
- Srl REMOTE RANGE HOOD LIGHT SWITCH, CONNECT TO HOOD LIGHT THRU JUNCTION BOX.
- Sb BURNER SAFETY SWITCH, PROVIDE WITH RED PLATE, MOUNTED 72" AFF
- Ds SINGLE POLE DIMMER SWITCH, 120V, 20A, SPEC GRADE, GROUNDING TYPE, MOUNT 48" AFF, 3-3-WAY, 4-4-WAY, LOWER CASE LETTER INDICATES FIXTURE OR CONTROLLED LOAD.
- PC PHOTOCELL
- LC LIGHTING CONTACTOR
- TC TIMECLOCK
- TELEPHONE/DATA DUAL JACK, MOUNT 18" AFF, RUN TWO CABLES BACK TO TBB. SEE SPECIFICATIONS FOR FURTHER INFORMATION
- DATA JACK, RUN TWO CABLES BACK TO TBB. SEE SPECIFICATIONS FOR FURTHER INFO
- CL FLUSH FLOOR MOUNTED TELEPHONE/DATA DUAL JACK, RUN TWO CABLES BACK TO TBB. "CL" DENOTES CEILING MOUNTED
- TELEPHONE JACK, MOUNT 18" AFF UNLESS NOTED OTHERWISE, RUN ONE CABLE BACK TO TBB. TELEPHONE BACK BOARD
- W WIFIROUTER, RUN CABLE BACK TO TBB OR IT ROOM, MOUNT ABOVE CEILING, "W" DENOTES WALL MOUNTED AT 72" AFF
- IC INTERCOM PANEL IN UNIT
- ICP INTERCOM PANEL AT RECEPTION OR MAIN ENTRY
- MECA MEDIA PANEL OR WIRING BOX FOR LOW VOLTAGE CONNECTIONS WITHIN TENANT UNIT, RUN CAT 6 CABLE FROM EACH UNIT MEDIA PANEL LOCATION BACK TO TBB
- CR CARD READER LOCATION: PROVIDE BOX AND 3/4" CONDUIT TO NEAREST LOCATION ABOVE SUSPENDED CEILING, PROVIDE 120V DOOR STRIKE POWER FROM NEAREST RECEPTACLE CIRCUIT.
- FACD FIRE ALARM CONTROL PANEL WITH DEDICATED TELEPHONE JACK
- AN FIRE ALARM ANNUNCIATOR PANEL
- FEED FIRE EXTINGUISHER ELECTRONIC MONITOR SHALL BE ACCOMPLISHED THROUGH USE OF AN ADDRESSABLE INTERFACE DEVICE AND SHALL PROVIDE INPUT TO THE FACP
- 30 FIRE ALARM AUDIO/VISUAL, MOUNT 6'-8" AFF, NUMBER DENOTES CANDELA RATING. "MH" DENOTES MINIHORN, "CL" DENOTES CEILING MOUNTED, NO DESIGNATION EQUALS 15cd
- CL FIRE ALARM PULL STATION, MOUNT 48" AFF
- CLSD FIRE ALARM VISUAL, STROBE ONLY, FLUSH MOUNT 6'-8" AFF, NUMBER DENOTES CANDELA RATINGS. "CL" DENOTES CEILING MOUNTED

PANEL NP1D (FACULTY RM) 120/208 3PH 4W 100 AMP MLO 42K AIC NEMA TYPE 1 (SURFACE)															
CKT #	LOAD DESCRIPTION	AT	P	CA	DF	DA	VA	CKT #	LOAD DESCRIPTION	AT	P	CA	DF	DA	VA
1	NEW QUAD AT ENTRY: CLASSRM #19	20	1	3	1.00	3	360	2	NEW QUAD AT ENTRY: CLASSRM #20	20	1	3	1.00	3	360
3	NEW QUAD AT ENTRY: CLASSRM #21	20	1	3	1.00	3	360	4	NEW QUAD AT ENTRY: CLASSRM #22	20	1	3	1.00	3	360
5	NEW QUAD AT ENTRY: CLASSRM #23	20	1	3	1.00	3	360	6	NEW DUPLEX AT WINDOW: CLASSRM #22	20	1	14	1.00	14	1681
7	NEW DUPLEX AT WINDOW: CLASSRM #23	20	1	14	1.00	14	1681	8	NEW QUAD AT ENTRY: CLASSRM #24	20	1	3	1.00	3	360
9	NEW QUAD AT ENTRY: CLASSRM #25	20	1	3	1.00	3	360	10	NEW DUPLEX AT WINDOW: CLASSRM #24	20	1	14	1.00	14	1681
11	NEW DUPLEX AT WINDOW: CLASSRM #25	20	1	14	1.00	14	1681	12	NEW QUAD AT ENTRY: CLASSRM #26	20	1	3	1.00	3	360
13	NEW QUAD AT ENTRY: CLASSRM #27	20	1	3	1.00	3	360	14	NEW DUPLEX AT WINDOW: CLASSRM #26	20	1	14	1.00	14	1681
15	NEW DUPLEX AT WINDOW: CLASSRM #27	20	1	14	1.00	14	1681	16	NEW QUAD AT ENTRY: CLASSRM #28	20	1	3	1.00	3	360
17	NEW QUAD AT ENTRY: CLASSRM #29	20	1	3	1.00	3	360	18	NEW DUPLEX AT WINDOW: CLASSRM #28	20	1	14	1.00	14	1681
19	NEW DUPLEX AT WINDOW: CLASSRM #29	20	1	14	1.00	14	1681	20	SPARE	20	1			0	0
21	SPARE	20	1			0	0	22	SPARE	20	1			0	0
23	SPARE	20	1			0	0	24	SPARE	20	1			0	0
25						0	0	26						0	0
27						0	0	28						0	0
29						0	0	30						0	0
31						0	0	32						0	0
33						0	0	34						0	0
35						0	0	36						0	0
37						0	0	38						0	0
39						0	0	40						0	0
41						0	0	42						0	0



NEWMARKET ELEMENTARY
ELECTRICAL UPGRADES
NEWMARKET, NH

Date Drawn - 03-22-22

Drawn By - CAT/SAJ

Project • 4787

Scale - AS NOTED

Revised -

SHEET TITLE
**Electrical Notes,
Legend &
Schedules**

E2.0